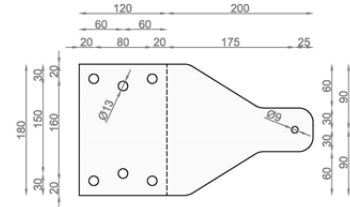


## beLine<sup>®</sup> MOUNTING KITS CATALOGUE 2017

### REFLECTOR MONTING KIT

#### KIT PARTS LIST

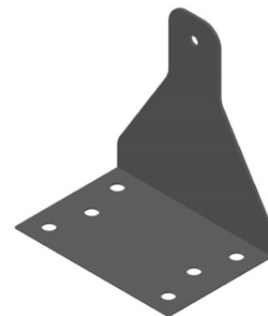
- 2 x 1.5 mm galvanized steel plate
- 2 x M8x20 8.8 (screw)
- 4 x M8x12 washer
- 2 x M8 safety nut screw



Wall mounting kit is a kit suitable for all lamps.

It is made out of 1.5 mm galvanised steel plate. Package contains screwing material for attaching the kit to the lamp. The screwing material for attaching the kit to the wall and bearing surface are NOT included.

The kit does NOT come standard with beLine<sup>®</sup> lamps and has to be ordered separately.



	pcs	weight	price
art. 9001 – reflector mounting kit	2 pcs	1.00 kg	<b>22,0 €</b>

### WALL MONTING KIT

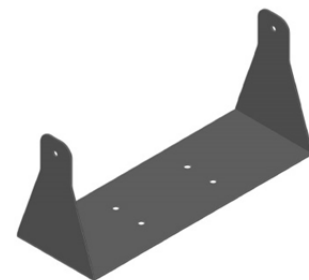
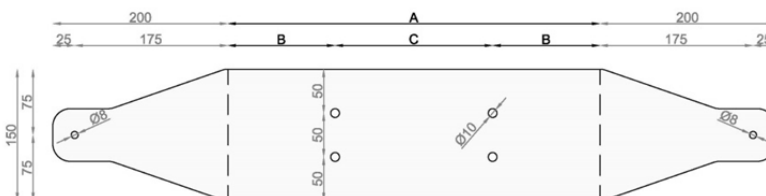
#### KIT PARTS LIST

- 1.5 mm galvanized steel plate
- 2 x M8x20 8.8 (screw)
- 4 x M8x12 washer
- 2 x M8 safety nut screw

Wall mounting kit is a kit suitable for all lamps. It is recommended for column installation.

It is made out of 1.5 mm galvanised steel plate. Package contains screwing material for attaching the kit to the lamp. The screwing material for attaching the kit to the wall and bearing surface are NOT included.

The kit does NOT come standard with beLine<sup>®</sup> lamps and has to be ordered separately.



	pcs	weight	A	B	C	price
art. 9004 – wall mounting kit 300	1 pc	1.05k g	325 mm	82,5 mm	160 mm	<b>22,00 €</b>
art. 9003 – wall mounting kit 400	1 pc	1.20 kg	425 mm	102,5 mm	220 mm	<b>26,00 €</b>
art. 9002 – wall mounting kit 600	1 pc	1.50 kg	625 mm	112,5 mm	400 mm	<b>33,00 €</b>

**LOW CEILING MOUNTING KIT**

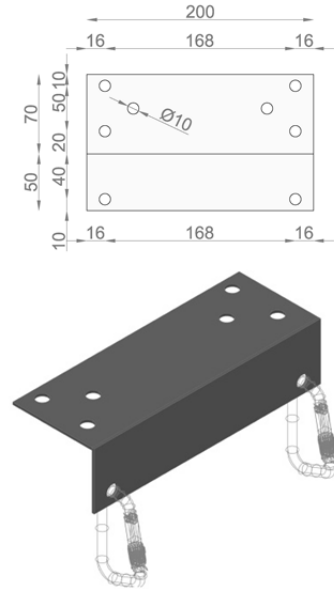
**KIT PARTS LIST**

- 2 x 1.5 mm galvanized steel plate
- 4 x 5.0 mm galvanized steel safety carabiner

Low ceiling mounting kit is a kit suitable for all lamps. It is made out of 1.5 mm galvanised steel plate. Package contains screwing material for attaching the hanger to the lamp. The screwing material for attaching the kit to the wall and bearing surface are NOT included.

It is used to mount the lamps on low ceiling so the lamps are 70 mm under the ceiling.

The kit does NOT come standard with beLine® lamps and has to be ordered separately.



	pcs	weight	price
art. 9005 – low ceiling mounting kit	2 pcs	0.75 kg	<b>12,0 €</b>

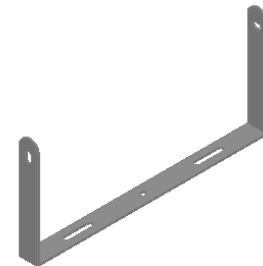
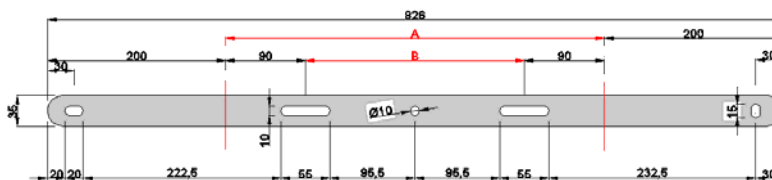
**WALL KIT beLine 50**

**KIT PARTS LIST**

- 3.0 mm steel plate powder coated
- 2 x M8x20 8.8 (screw)
- 4 x M8x12 washer
- 2 x M8 safety nut screw

Wall mounting kit is a kit suitable for **beLine® 50** lamps. It is recommended for column or wall installation. It is made out of 3.0 mm steel plate. Package contains screwing material for attaching the kit to the lamp. The screwing material for attaching the kit to the wall and bearing surface are NOT included.

The kit does NOT come standard with **beLine® 50** lamps and has to be ordered separately.



	pcs	weight	A	B	price
art. 9011 – wall mounting kit 300	1 pc	0.60k g	326 mm	146 mm	<b>9,00 €</b>
art. 9010 – wall mounting kit 400	1 pc	0.75 kg	426 mm	246 mm	<b>11,00 €</b>
art. 9009 – wall mounting kit 600	1 pc	1.00 kg	626 mm	446 mm	<b>13,00 €</b>

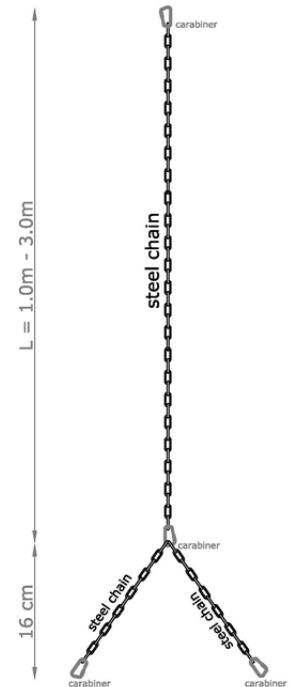
**STEEL CHAIN HANGING KIT**

HANGER PARTS	LOAD BEARING CAPACITY
2.2 mm galvanized chain	220 kg
4.0 mm carabiner	40 kg
<hr/>	
CHAIN HANGER (1 pc):	40 kg

One piece steel chain hanger has the capacity of bearing 40 kg weight which is the bearing capacity of the carabiner which is CE certified as is the chain.

The steel chain hanger does NOT come standard with beLine® lamps and has to be ordered separately.

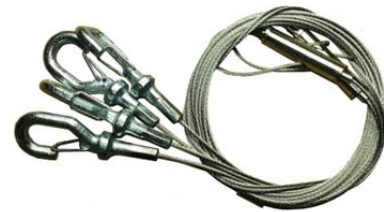
	total length	pcs	weight	price
art. 9008 – chain hanging kit (3m chain)	3.33 m	2 pc	0,65 kg	<b>13,0 €</b>
art. 9007 – chain hanging kit (2m chain)	2.33 m	2 pc	0,48 kg	<b>10,0 €</b>
art. 9006 – chain hanging kit (1m chain)	1.33 m	2 pc	0,31 kg	<b>8,0 €</b>



**wire hanging kit (included with the lamp for old orders)**

**WIRE**

2.0 mm steel wire	2.0 m
Galvanized carabiner	4 pcs
Steel adjuster	1 pc
Total weight	0,25 kg
Load bearing capacity (pair)	30 kg
<hr/>	
	total length
steel wire hanger max length	2.50 m
steel wire hanger min length	0,37 m



**SILICON CABLE + SCHUKO**

**CABLE**

Silicone cable:	3x 1,5 mm SIHF - FG4G4 300/500
Working temperature:	-40 °C to +180 °C
Max voltage:	500 V

**SCHUKO**

Input voltage:	230V
IP protection	IP44
Material:	rubber

	total length	weight	price
art. 9201-1m silicon cable + SCHUKO	1.00 m	0,20 kg	<b>8,2€</b>
art. 9202-2m silicon cable + SCHUKO	2.00 m	0,30 kg	<b>9,2€</b>
art. 9203-3m silicon cable + SCHUKO	3.00 m	0,40 kg	<b>10,2€</b>



Last update : march 2017, SES Group d.o.o.