

beLine70AHV 130 W

only available with PowerBox

2018

light source **60 x OSRAM**

total consumption **130 W ± 5 %**

LED output @ +25 °C **+ 50 °C**

total lm (LED) **21.027 lm 20.186 lm**

lm / wat (LED) **162 lm/wat 155 lm/wat**

T_J (°C) **65 °C 85 °C**

luminaire output @ 25 °C **18.571 lm - 20.186 lm**

LED working @ **37% [740 mA]**

input voltage **PowerBox 150 [143VDC]**

LED driver **Inventronics LED driver in PowerBox**

LED driver efficiency **93,0%**

power factor @ full power **99%**

colour temperature **4000 K**

CRI **> 70**

secondary optics **no optics, N, W, WW, WWW**

radio dimming **standard in PowerBox**

PIR sensor **not available**

operating temperature **-30 °C to +80 °C**

mounting height **8 m to 40 m**

lamp lifespan **L70@70.000 hrs@80°C**

warranty on all components **50.000 hrs or 5 years**

housing – heatsink **extruded 99,7% aluminum**

optics cover **3.2 mm extra white tempered glass**

connection **IP66 connector**

cooling surface **0,82 m2**

IP rating **IP65**

IK code **IK08**

protection class IEC **class I**

rough service mark **YES**

lamp dimensions **A/B/C = 425/315/130 mm**

lamp weight **7,7 kg**

packaging dimensions **A/B/C = 525/320/150 mm**

packaging weight **7,2 kg**



Photometric curves



N NARROW(30°)



W WIDE(49°)



WW VERYWIDE(64°)



WWW VERYVERYWIDE(104°)

beLine70AHV 130 W

only available with PowerBox

Lamp version	optics	lm output	efficiency
130W beLine 70AHV [FR] - 60OGWN470-104FREE00-400A1	NO OPTICS	20.186 lm	155 lm/wat
130W beLine 70AHV [N] - 60OGWN470-104C13233-400A1	N (NARROW)	18.773 lm	144 lm/wat
130W beLine 70AHV [W] - 60OGWN470-104C14605-400A1	W (WIDE)	18.974 lm	146 lm/wat
130W beLine 70AHV [WW] - 60OGWN470-104C14606-400A1	WW (VERYWIDE)	18.571 lm	143 lm/wat
130W beLine 70AHV [WWW] - 60OGWN470-104C14724-400A1	WWW (VERYVERYWIDE)	18.974 lm	146 lm/wat

PowerBox connection

All beLine70AHV lamps are only available with the PowerBox unit.

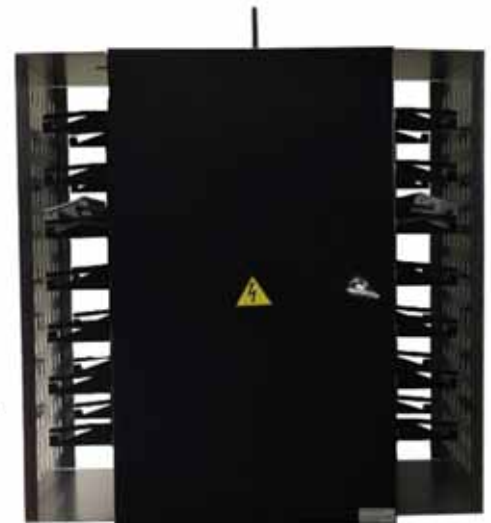
All beLine70AHV lamps have no LED driver inside the lamp due to HIGH temperatures they can be used on.

All beLine70AHV lamps can not be plugged to a standard 100VAC or 230VAC system but on PowerBox DC system.

The cable from PowerBox unit to beLine 70AHV lamp has to be 2x1,5mm² to prevent major voltage loses on cables.

beLine 70AHV lams can be installed up to 100 m from the POERBOX unit under DC current.

For technical details and installation note please refere to PowerBox datasheet.



Mounting kit options



Reflector MC



Wall MC



Low ceiling MC



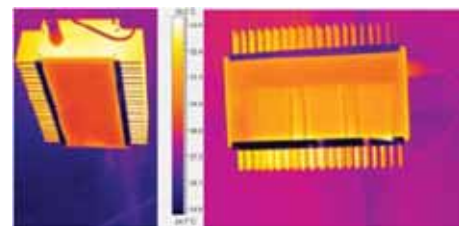
Steel chain



Wire hanging kit

Heat sink design

Unique linear design with vertical ribs allows the LEDs to have an optimal heat dissipation without a worry of them overheating. Side vertical ribs allow the dust to fall off the lamp and prevent accumulation of dust on the vital parts of the lamp.



Certificates and protection