

beLine70A 115 W

2018

light source **60 x OSRAM**

total consumption **115 W ± 5 %**

LED output @ **+ 25 °C + 50 °C + 70 °C**

total lm (LED) **18.878 lm 18.123 lm 17.746 lm**

lm / wat (LED) **164 lm/wat 158 lm/wat 154 lm/wat**

Tj (°C) **65 °C 85 °C 100 °C**

luminaire output @ 25 °C **16.673 lm - 18.123 lm**

LED working @ **45% [900 mA]**

input voltage **90-305 V**

input frequency **50 - 60 Hz**

LED driver **Inventronics LED driver**

LED driver efficiency **93,0%**

power factor @ full power **99%**

colour temperature **4000 K**

CRI **> 70**

secondary optics **no optics, N, W, WW, WWW, SHELVING**

radio dimming **optional DALI optional**

PIR sensor **optional 0-10 optional**

operating temperature **-30 °C to +70 °C**

mounting height **4 m to 30 m**

lamp lifespan **L70@100.000 hrs**

warranty on all components **50.000 hrs or 5 years**

housing – heatsink **extruded 99,7% aluminum**

optics cover **3.2 mm extra white tempered glass**

connection **IP66 connector**

cooling surface **0,62 m2**

IP rating **IP65**

IK code **IK08**

protection class IEC **class I**

rough service mark **YES**

lamp dimensions **A/B/C = 425/315/130 mm**

lamp weight **8,7 kg**

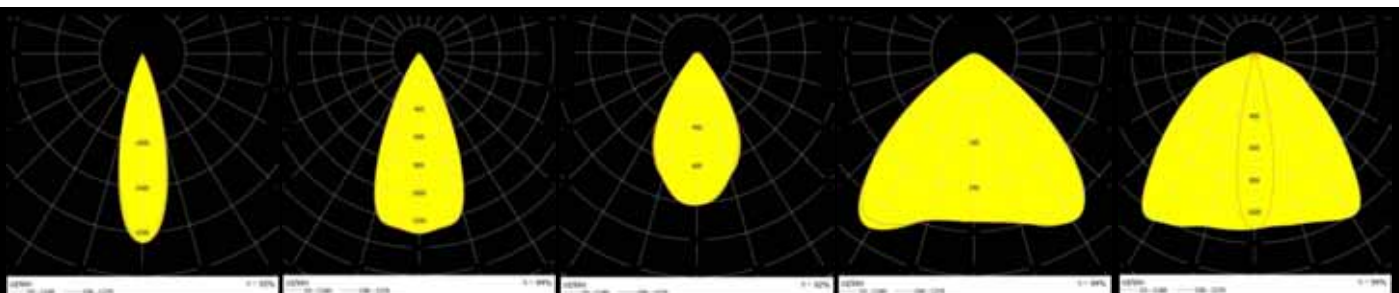
packaging dimensions **A/B/C = 525/320/150 mm**

packaging weight **9,2 kg**



SES Lighting radio dimming transmitter

Photometric curves



N NARROW(30°)

W WIDE(49°)

WW VERYWIDE(64°)

WWW VERYVERYWIDE(104°)

WH SHELVING (23°/111°)

beLine70A 115 W

Lamp version	optics	lm output	efficiency
115W beLine 70A [FR] - 60OGWN470-00FREE00-400A1	NO OPTICS	18.123 lm	158 lm/wat
115W beLine 70A [N] - 60OGWN470-30C13233-400A1	N (NARROW)	16.855 lm	147 lm/wat
115W beLine 70A [W] - 60OGWN470-49C14605-400A1	W (WIDE)	17.036 lm	148 lm/wat
115W beLine 70A [WW] - 60OGWN470-64C14606-400A1	WW (VERYWIDE)	16.673 lm	145 lm/wat
115W beLine 70A [WWW] - 60OGWN470-104C14724-400A1	WWW (VERYVERYWIDE)	17.036 lm	148 lm/wat
115W beLine 70A [WH] - 60OGWN470-WHC13749-400A1	WH (SHELVINGS)	17.036 lm	148 lm/wat

Other lamp performance options

Radio dimming is optional. Lamps with radio beBox dimming have -D at the end.

example: 115W beLine 70A-D [N] - 60OGWN470-30C13233-400A1

(Inventronics EUD series LED driver)

Lamps can have PIR sensor and dimming at the same time. Lamps have -PD at the end.

example: 115W beLine 70A-PD [N] - 60OGWN470-30C13233-400A1

(Inventronics EUD series LED driver)

Lamps can have a DALI LED driver inside. Lamps have -DALI at the end.

example: 115W beLine 70A-DALI [N] - 60OGWN470-30C13233-400A1

(Inventronics or Tridonic)

Lamps can have a 0-10 dimmable LED driver inside. Lamps have -(0-10) at the end.

example: 115W beLine 70A-(0-10) [N] - 60OGWN470-30C13233-400A1

(Inventronics EUD series LED driver)

INVENTRONICS programmable LED drivers (EUD series) are used for dimmable options. LED drivers come with 5 year warranty.

Mounting kit options



Reflector MC



Wall MC



Low ceiling MC



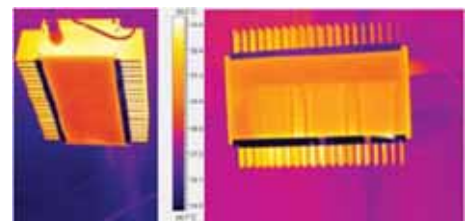
Steel chain



Wire hanging kit

Heat sink design

Unique linear design with vertical ribs allows the LEDs to have an optimal heat dissipation without a worry of them overheating. Side vertical ribs allow the dust to fall off the lamp and prevent accumulation of dust on the vital parts of the lamp.



Certificates and protection