

**beLine70A 130 W**

2018

light source **60 x OSRAM**

total consumption **130 W ± 5 %**

LED output @ +25 °C **+ 50 °C**

total lm (LED) **21.027 lm 20.186 lm**

lm / wat (LED) **162 lm/wat 155 lm/wat**

T<sub>J</sub> (°C) **65 °C 85 °C**

luminaire output @ 25 °C **18.571 lm - 20.186 lm**

LED working @ **37% [740 mA]**

input voltage **90-305 V**

input frequency **50 - 60 Hz**

LED driver **Inventronics LED driver**

LED driver efficiency **93,0%**

power factor @ full power **99%**

colour temperature **4000 K**

CRI **> 70**

secondary optics **no optics, N, W, WW, WWW, SHELVING**

radio dimming **optional** DALI **optional**

PIR sensor **optional** 0-10 **optional**

operating temperature **-30 °C to +70°C**

mounting height **4 m to 30 m**

lamp lifespan **L70@100.000 hrs**

warranty on all components **50.000 hrs or 5 years**

housing – heatsink **extruded 99,7% aluminum**

optics cover **3.2 mm extra white tempered glass**

connection **IP66 connector**

cooling surface **0,82 m2**

IP rating **IP65**

IK code **IK08**

protection class IEC **class I**

rough service mark **YES**

lamp dimensions **A/B/C = 425/315/130 mm**

lamp weight **8,7 kg**

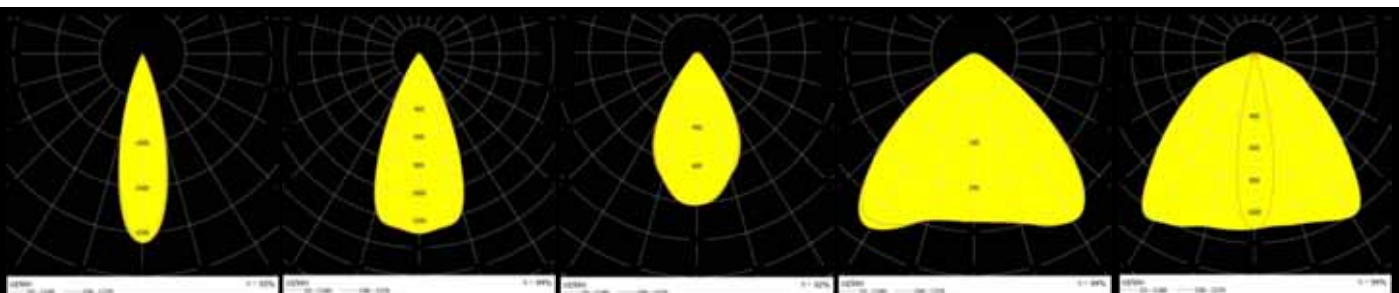
packaging dimensions **A/B/C = 525/320/150 mm**

packaging weight **9,2 kg**



SES Lighting radio dimming transmitter

**Photometric curves**



N NARROW(30°)

W WIDE(49°)

WW VERYWIDE(64°)

WWW VERYVERYWIDE(104°)

WH SHELVING (23°/111°)

## beLine70A 130 W

Lamp version	optics	lm output	efficiency
130W beLine 70A [FR] - 60OGWN470-00FREE00-400A1	<b>NO OPTICS</b>	20.186 lm	155 lm/wat
130W beLine 70A [N] - 60OGWN470-30C13233-400A1	<b>N (NARROW)</b>	18.773 lm	144 lm/wat
130W beLine 70A [W] - 60OGWN470-49C14605-400A1	<b>W (WIDE)</b>	18.974 lm	146 lm/wat
130W beLine 70A [WW] - 60OGWN470-64C14606-400A1	<b>WW (VERYWIDE)</b>	18.571 lm	143 lm/wat
130W beLine 70A [WWW] - 60OGWN470-104C14724-400A1	<b>WWW (VERYVERYWIDE)</b>	18.974 lm	146 lm/wat
130W beLine 70A [WH] - 60OGWN470-WHC13749-400A1	<b>WH (SHELVINGS)</b>	18.974 lm	146 lm/wat

### Other lamp performance options

Radio dimming is optional. Lamps with radio beBox dimming have -D at the end.

example: 130W beLine 70A-D [N] - 60OGWN470-30C13233-400A1

(Inventronics EUD series LED driver)

Lamps can have PIR sensor and dimming at the same time. Lamps have -PD at the end.

example: 130W beLine 70A-PD [N] - 60OGWN470-30C13233-400A1

(Inventronics EUD series LED driver)

Lamps can have a DALI LED driver inside. Lamps have -DALI at the end.

example: 130W beLine 70A-DALI [N] - 60OGWN470-30C13233-400A1

(Inventronics or Tridonic)

Lamps can have a 0-10 dimmable LED driver inside. Lamps have -(0-10) at the end.

example: 130W beLine 70A-(0-10) [N] - 60OGWN470-30C13233-400A1

(Inventronics EUD series LED driver)

INVENTRONICS programmable LED drivers (EUD series) are used for dimmable options. LED drivers come with 5 year warranty.

### Mounting kit options



Reflector MC



Wall MC



Low ceiling MC



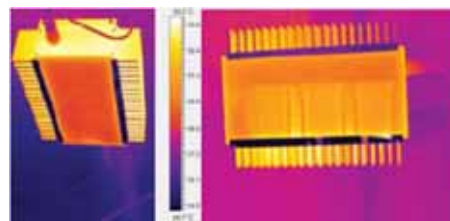
Steel chain



Wire hanging kit

### Heat sink design

Unique linear design with vertical ribs allows the LEDs to have an optimal heat dissipation without a worry of them overheating. Side vertical ribs allow the dust to fall off the lamp and prevent accumulation of dust on the vital parts of the lamp.



### Certificates and protection