

beLine SuperR 70A 200 W

2018

light source **80 x OSRAM**
 total consumption **200 W ± 5 %**
 LED output @ +25 °C + 40 °C
 total lm (LED) **31.769 lm** **30.499 lm**
 lm / wat (LED) **159 lm/wat** **152 lm/wat**
 Tj (°C) **65 °C** **85 °C**
 luminaire output @ 25 °C **28.059 lm - 30.499 lm**
 LED working @ **37% [700 mA]**
 input voltage **90-305 V**
 input frequency **50 - 60 Hz**
 LED driver **2 Inventronics LED driver**
 LED driver efficiency **93,0%**
 power factor @ full power **99%**
 colour temperature **4000 K**
 CRI > **70**
 secondary optics **no optics, N, W, WW, WWW, SHELVING**
 radio dimming **optional**
 PIR sensor **optional**
 operating temperature **-30 °C to +70 °C**
 mounting height **4 m to 35 m**
 lamp lifespan **L70@100.000 hrs**
 warranty on all components **50.000 hrs or 5 years**
 housing – heatsink **extruded 99,7% aluminum**
 optics cover **3.2 mm extra white tempered glass**
 connection **IP66 connector**
 cooling surface **1,22 m2**
 IP rating **IP65**
 IK code **IK08**
 protection class IEC **class I**
 rough service mark **YES**
 lamp dimensions **A/B/C = 625/315/130 mm**
 lamp weight **12,5 kg**
 packaging dimensions **A/B/C = 725/320/150 mm**
 packaging weight **13,0 kg**



SES Lighting radio dimming transmitter

Photometric curves



N NARROW(30°)

W WIDE(49°)

WW VERYWIDE(64°)

WWW VERYVERYWIDE(104°)

WH SHELVING (23°/111°)

beLine SuperR 70A 200 W

Lamp version	optics	lm output	efficiency
200W beLine 70A [FR] - 80OGWN470-00FREE00-600A1	NO OPTICS	30.499 lm	152 lm/wat
200W beLine 70A [N] - 80OGWN470-30C13233-600A1	N (NARROW)	28.364 lm	142 lm/wat
200W beLine 70A [W] - 80OGWN470-49C14605-600A1	W (WIDE)	28.669 lm	143 lm/wat
200W beLine 70A [WW] - 80OGWN470-64C14606-600A1	WW (VERYWIDE)	28.059 lm	140 lm/wat
200W beLine 70A [WWW] - 80OGWN470-104C14724-600A1	WWW (VERYVERYWIDE)	28.669 lm	143 lm/wat
200W beLine 70A [WH] - 80OGWN470-WHC13749-600A1	WH (SHELVINGS)	28.669 lm	143 lm/wat

Other lamp performance options

Radio dimming is optional. Lamps with radio beBox dimming have -D at the end.

example: 200W beLine 70A-D [N] - 80OGWN470-30C13233-600A1

(2 pcs of Inventronics EUD series LED driver)

Lamps can have PIR sensor and dimming at the same time. Lamps have -PD at the end.

example: 200W beLine 70A-PD [N] - 80OGWN470-30C13233-600A1

(2 pcs of Inventronics EUD series LED driver)

INVENTRONICS programmable LED drivers (EUD series) are used for dimmable options. LED drivers come with 5 year warranty.

Mounting kit options



Reflector MC



Wall MC



Low ceiling MC



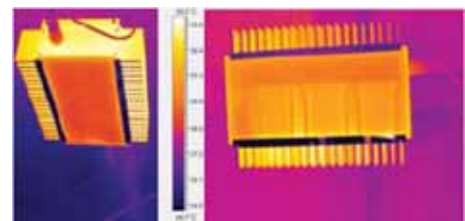
Steel chain



Wire hanging kit

Heat sink design

Unique linear design with vertical ribs allows the LEDs to have an optimal heat dissipation without a worry of them overheating. Side vertical ribs allow the dust to fall off the lamp and prevent accumulation of dust on the vital parts of the lamp.



Certificates and protection