

**beLine SuperR 70A 250 W**

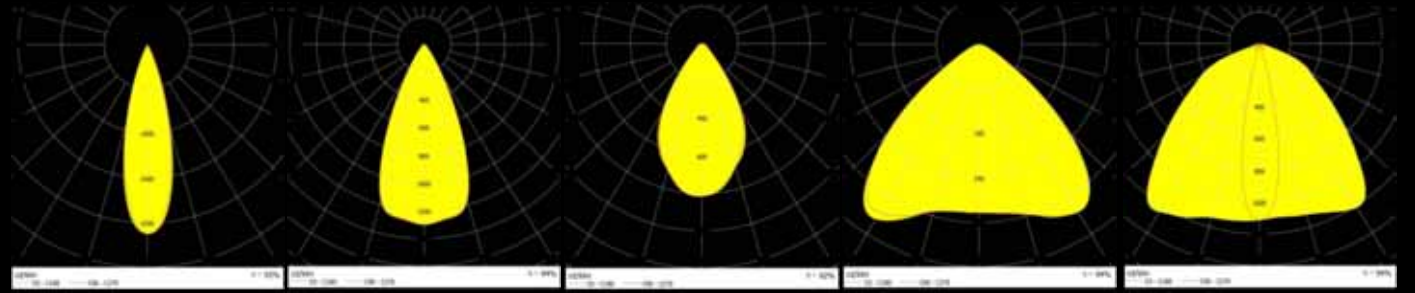
2018

light source **96 x OSRAM**  
 total consumption **250 W ± 5 %**  
 LED output @ +25 °C    **+ 40 °C**  
 total lm (LED) **38.899 lm    37.343 lm**  
 lm / wat (LED) **156 lm/wat    149 lm/wat**  
 Tj (°C) **70 °C    90 °C**  
 luminaire output @ 25 °C **34.356 lm - 37.343 lm**  
 LED working @ **44% [880 mA]**  
 input voltage **90-305 V**  
 input frequency **50 - 60 Hz**  
 LED driver **2 Inventronics LED driver**  
 LED driver efficiency **93,0%**  
 power factor @ full power **99%**  
 colour temperature **4000 K**  
 CRI **> 70**  
 secondary optics **no optics, N, W, WW, WWW, SHELVING**  
 radio dimming **optional**  
 PIR sensor **optional**  
 operating temperature **-30 °C to +40 °C**  
 mounting height **4 m to 40 m**  
 lamp lifespan **L70@100.000 hrs**  
 warranty on all components **50.000 hrs or 5 years**  
 housing – heatsink **extruded 99,7% aluminum**  
 optics cover **3.2 mm extra white tempered glass**  
 connection **IP66 connector**  
 cooling surface **1,22 m2**  
 IP rating **IP65**  
 IK code **IK08**  
 protection class IEC **class I**  
 rough service mark **YES**  
 lamp dimensions **A/B/C = 625/315/130 mm**  
 lamp weight **13,1 kg**  
 packaging dimensions **A/B/C = 725/320/150 mm**  
 packaging weight **13,6 kg**



SES Lighting radio dimming transmitter

**Photometric curves**



N NARROW(30°)    W WIDE(49°)    WW VERYWIDE(64°)    WWW VERYVERYWIDE(104°)    WH SHELVING (23°/111°)

## beLine SuperR 70A 250 W

Lamp version	optics	lm output	efficiency
250W beLine SuperR 70A [FR] - 96OGWN470-00FREE00-600A1	<b>NO OPTICS</b>	37.343 lm	149 lm/wat
250W beLine SuperR 70A [N] - 96OGWN470-30C13233-600A1	<b>N (NARROW)</b>	34.729 lm	139 lm/wat
250W beLine SuperR 70A [W] - 96OGWN470-49C14605-600A1	<b>W (WIDE)</b>	35.103 lm	140 lm/wat
250W beLine SuperR 70A [WW] - 96OGWN470-64C14606-600A1	<b>WW (VERYWIDE)</b>	34.356 lm	137 lm/wat
250W beLine SuperR 70A [WWW] - 96OGWN470-104C14724-600A1	<b>WWW (VERYVERYWIDE)</b>	35.103 lm	140 lm/wat
250W beLine SuperR 70A [WH] - 96OGWN470-WHC13749-600A1	<b>WH (SHELVINGS)</b>	35.103 lm	140 lm/wat

### Other lamp performance options

Radio dimming is optional. Lamps with radio beBox dimming have -D at the end.

example: 250W beLine 70A-D [N] - 96OGWN470-30C13233-600A1

(2 pcs of Inventronics EUD series LED driver)

Lamps can have PIR sensor and dimming at the same time. Lamps have -PD at the end.

example: 250W beLine 70A-PD [N] - 96OGWN470-30C13233-600A1

(2 pcs of Inventronics EUD series LED driver)

example:

example:

INVENTRONICS programmable LED drivers (EUD series) are used for dimmable options. LED drivers come with 5 year warranty.

### Mounting kit options



Reflector MC



Wall MC



Low ceiling MC



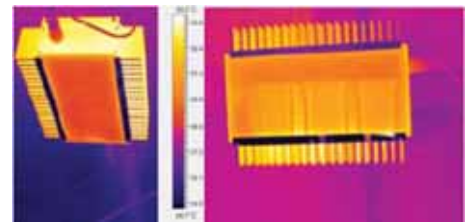
Steel chain



Wire hanging kit

### Heat sink design

Unique linear design with vertical ribs allows the LEDs to have an optimal heat dissipation without a worry of them overheating. Side vertical ribs allow the dust to fall off the lamp and prevent accumulation of dust on the vital parts of the lamp.



### Certificates and protection

