

beLine SuperR 70A 300 W

2018

light source **96 x OSRAM**

total consumption **300 W ± 5 %**

LED output @ +25 °C +40 °C

total lm (LED) **45.226 lm** **43.417 lm**

lm / wat (LED) **151 lm/wat** **145 lm/wat**

T_J (°C) **70 °C** **90 °C**

luminaire output @ 25 °C **39.944 lm - 43.417 lm**

LED working @ **43% [860 mA]**

input voltage **90-305 V**

input frequency **50 - 60 Hz**

LED driver **2 Inventronics LED driver**

LED driver efficiency **93,0%**

power factor @ full power **99%**

colour temperature **4000 K**

CRI > **70**

secondary optics **no optics, N, W, WW, WWW, SHELVING**

radio dimming **optional**

PIR sensor **optional**

operating temperature **-30 °C to +40 °C**

mounting height **4 m to 40 m**

lamp lifespan **L70@100.000 hrs**

warranty on all components **50.000 hrs or 5 years**

housing – heatsink **extruded 99,7% aluminum**

optics cover **3.2 mm extra white tempered glass**

connection **IP66 connector**

cooling surface **1,22 m²**

IP rating **IP65**

IK code **IK08**

protection class IEC **class I**

rough service mark **YES**

lamp dimensions **A/B/C = 625/315/130 mm**

lamp weight **13,1 kg**

packaging dimensions **A/B/C = 725/320/150 mm**

packaging weight **13,6 kg**



SES Lighting radio dimming transmitter

Photometric curves



N NARROW(30°)

W WIDE(49°)

WW VERYWIDE(64°)

WWW VERYVERYWIDE(104°)

WH SHELVING (23°/111°)

beLine SuperR 70A 300 W

Lamp version	optics	lm output	efficiency
300W beLine SuperR 70A [FR] - 96OGWN470-00C14606-600A1	NO OPTICS	43.417 lm	145 lm/wat
300W beLine SuperR 70A [N] - 96OGWN470-30C14724-600A1	N (NARROW)	40.378 lm	135 lm/wat
300W beLine SuperR 70A [W] - 96OGWN470-49C13749-600A1	W (WIDE)	40.812 lm	136 lm/wat
300W beLine SuperR 70A [WW] - 96OGWN470-64C13233-600A1	WW (VERYWIDE)	39.944 lm	133 lm/wat
300W beLine SuperR 70A [WWW] - 96OGWN470-104C14605-600A1	WWW (VERYVERYWIDE)	40.812 lm	136 lm/wat
300W beLine SuperR 70A [WH] - 96OGWN470-WHC14724-600A1	WH (SHELVINGS)	40.812 lm	136 lm/wat

Other lamp performance options

Radio dimming is optional. Lamps with radio beBox dimming have -D at the end.

example: 300W beLine 70A-D [N] - 96OGWN470-30C13233-600A1

(2 pcs of Inventronics EUD series LED driver)

Lamps can have PIR sensor and dimming at the same time. Lamps have -PD at the end.

example: 300W beLine 70A-PD [N] - 96OGWN470-30C13233-600A1

(2 pcs of Inventronics EUD series LED driver)

example:

example:

INVENTRONICS programmable LED drivers (EUD series) are used for dimmable options. LED drivers come with 5 year warranty.

Mounting kit options



Reflector MC



Wall MC



Low ceiling MC



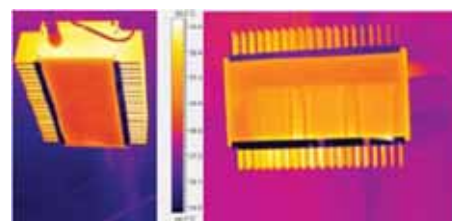
Steel chain



Wire hanging kit

Heat sink design

Unique linear design with vertical ribs allows the LEDs to have an optimal heat dissipation without a worry of them overheating. Side vertical ribs allow the dust to fall off the lamp and prevent accumulation of dust on the vital parts of the lamp.



Certificates and protection

