

light source **OSRAM LEDs**

total consumption **45 W ± 5 %**

LED output @ + 25 °C + 40 °C

total lm (LED) **7.948 lm 7.630 lm**

lm / wat (LED) **177 lm/wat 170 lm/wat**

T_J (°C) **55 °C 70 °C**

luminaire output @ 25 °C **7.019 lm - 7.630 lm**

LED working @ **25% [500 mA]**

input voltage **190-230 V**

input frequency **50 - 60 Hz**

LED driver **Tridonic LC, LCI series**

LED driver efficiency **90,0%**

power factor @ full power **95%**

colour temperature **4000 K**

CRI **> 70**

secondary optics **no optics, N, W, WW, WWW, SHELVING**

operating temperature **-30 °C to +40 °C**

mounting height **2 m to 8 m**

lamp lifespan **L70@70.000 hrs**

warranty on all components **5 years**

housing – heatsink **extruded 99,7% aluminum**

optics cover **PMMA cover**

connection **IP66 connector**

cooling surface **0,25 m²**

IP rating **IP65**

protection class IEC **class I**

rough service mark **YES**

lamp dimensions **A/B/C = 700/112/69 mm**

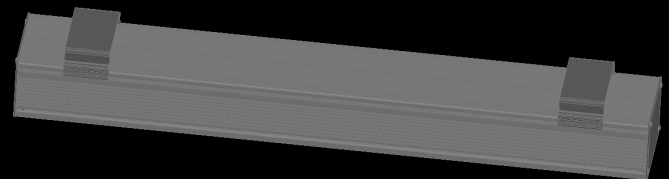
lamp weight **2,4 kg**

packaging dimensions **A/B/C = 800/117/89 mm**

packaging weight **2,9 kg**

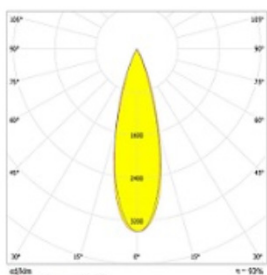


FAST MOUNTING

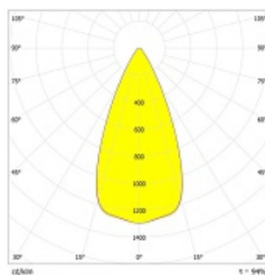


CE **RoHS**

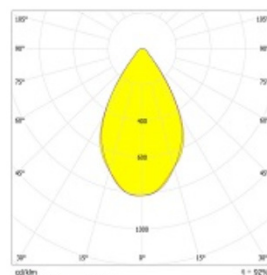
Photometric curves



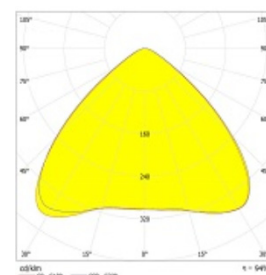
N NARROW(30°)
7.096lm (158lm/wat)



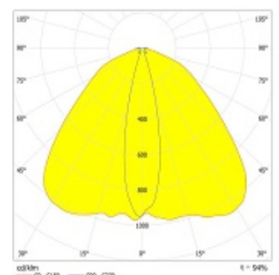
W WIDE(49°)
7.172lm (159lm/wat)



WW VERYWIDE(64°)
7.019lm (156lm/wat)



WWW VERYVERYWIDE(104°)
7.172lm (159lm/wat)



WH SHELVING (23°/111°)
7.172lm (159lm/wat)