

light source **OSRAM LEDs**

total consumption **75 W ± 5 %**

LED output @ + 25 °C + 40 °C

total lm (LED) **13.127 lm 12.602 lm**

lm / wat (LED) **175 lm/wat 168 lm/wat**

T_J (°C) **55 °C 70 °C**

luminaire output @ 25 °C **11.594 lm - 12.602 lm**

LED working @ **27% [550 mA]**

input voltage **190-230 V**

input frequency **50 - 60 Hz**

LED driver **Tridonic LC, LCI series**

LED driver efficiency **90,0%**

power factor @ full power **95%**

colour temperature **4000 K**

CRI **> 70**

secondary optics **no optics, N, W, WW, WWW, SHELVING**

operating temperature **-30 °C to +40 °C**

mounting height **2 m to 10 m**

lamp lifespan **L70@70.000 hrs**

warranty on all components **5 years**

housing – heatsink **extruded 99,7% aluminum**

optics cover **PMMA cover**

connection **IP66 connector**

cooling surface **0,37 m²**

IP rating **IP65**

protection class IEC **class I**

rough service mark **YES**

lamp dimensions **A/B/C = 1050/112/69 mm**

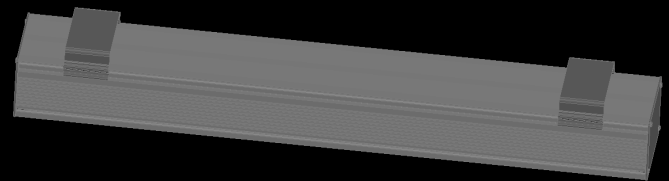
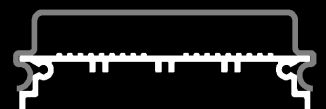
lamp weight **2,8 kg**

packaging dimensions **A/B/C = 1150/117/89 mm**

packaging weight **3,3 kg**

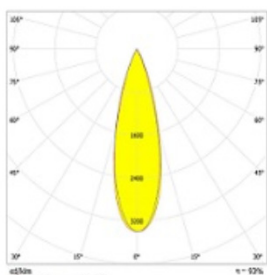


FAST MOUNTING

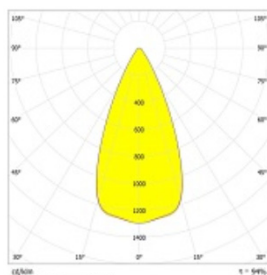


CE **RoHS**   

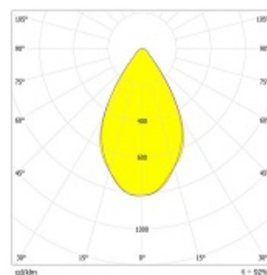
Photometric curves



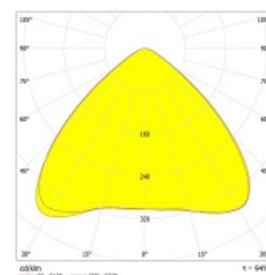
N NARROW(30°)
11.720lm (156lm/wat)



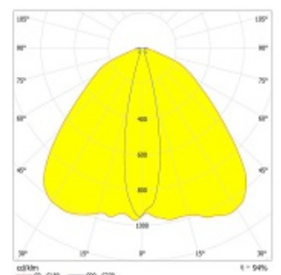
W WIDE(49°)
11.846lm (158lm/wat)



WW VERYWIDE(64°)
11.594lm (155lm/wat)



WWW VERYVERYWIDE(104°)
11.846lm (158lm/wat)



WH SHELVING (23°/111°)
11.846lm (158lm/wat)