

**beLINEAR PL 20 W**

June 2018

light source **OSRAM LEDs**

total consumption **20 W ± 5 %**

LED output @ + 25 °C      + 40 °C

total lm (LED) **4.391 lm**      **4.215 lm**

lm / wat (LED) **220 lm/wat**      **211 lm/wat**

T<sub>J</sub> (°C) **55 °C**      **70 °C**

luminaire output @ 25 °C **3.119 lm (156 lm/W)**

LED working @ **33% [50 mA]**

input voltage **190-230 V**

input frequency **50 - 60 Hz**

LED driver **Tridonic LC, LCI series**

LED driver efficiency **90,0%**

power factor @ full power **95%**

colour temperature **4000 K**

CRI **> 80**

secondary optics **MILKY DIFUSOR PROTECTION**

operating temperature **-30 °C to +40 °C**

mounting height **2 m to 7 m**

lamp lifespan **L70@70.000 hrs**

warranty on all components **5 years**

housing – heatsink **extruded 99,7% aluminum**

optics cover **PMMA cover**

connection **IP66 connector**

cooling surface **0,12 m<sup>2</sup>**

IP rating **IP65**

protection class IEC **class I**

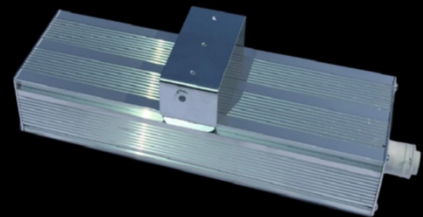
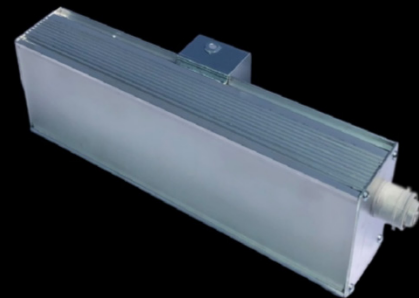
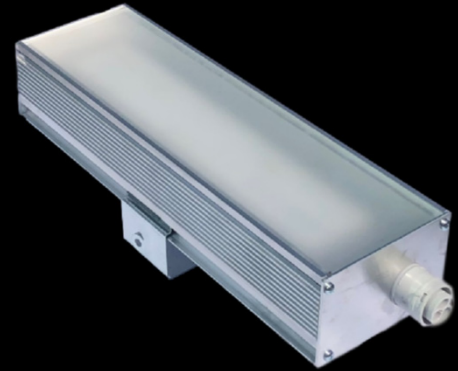
rough service mark **YES**

lamp dimensions **A/B/C = 400/112/69 mm**

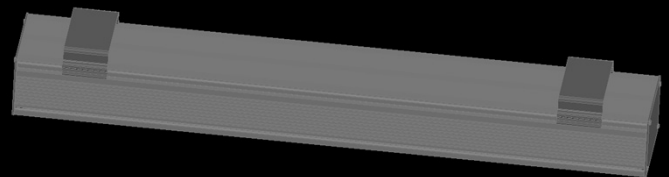
lamp weight **1,8 kg**

packaging dimensions **A/B/C = 500/117/89 mm**

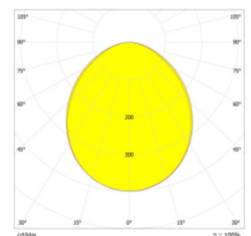
packaging weight **2,3 kg**



FAST MOUNTING



**Photometric curves**



**MILKY PROTECTION**

**3.119lm (156lm/wat)**