

beLINEAR PL 60 W

June 2018

light source **OSRAM LEDs**

total consumption **60 W ± 5 %**

LED output @ **+ 25 °C** **+ 40 °C**

total lm (LED) **11.246 lm** **10.796 lm**

lm / wat (LED) **187 lm/wat** **180 lm/wat**

T_J (°C) **55 °C** **70 °C**

luminaire output @ 25 °C **8.565 lm (143 lm/W)**

LED working @ **33% [65 mA]**

input voltage **190-230 V**

input frequency **50 - 60 Hz**

LED driver **Tridonic LC, LCI series**

LED driver efficiency **90,0%**

power factor @ full power **95%**

colour temperature **4000 K**

CRI **> 80**

secondary optics **MILKY DIFUSOR PROTECTION**

operating temperature **-30 °C to +40 °C**

mounting height **2 m to 7 m**

lamp lifespan **L70@70.000 hrs**

warranty on all components **5 years**

housing – heatsink **extruded 99,7% aluminum**

optics cover **PMMA cover**

connection **IP66 connector**

cooling surface **0,25 m²**

IP rating **IP65**

protection class IEC **class I**

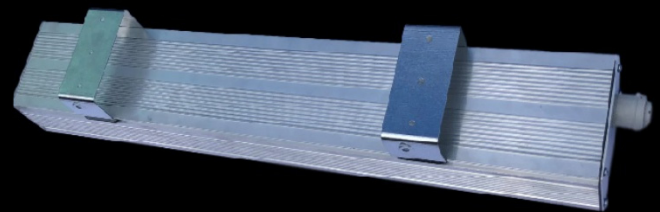
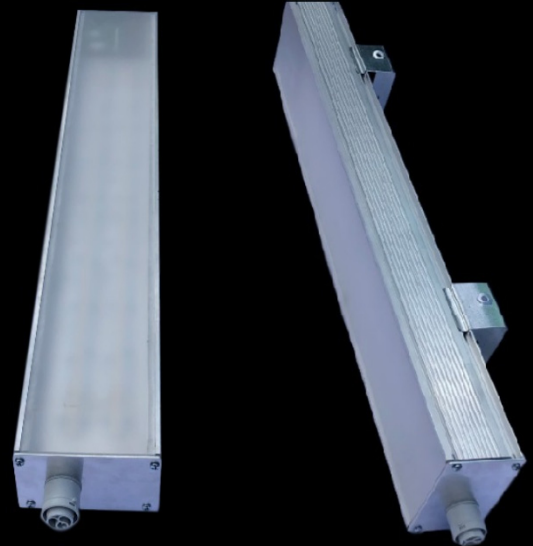
rough service mark **YES**

lamp dimensions **A/B/C = 800/112/69 mm**

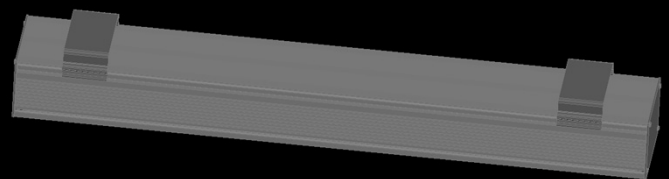
lamp weight **3,1 kg**

packaging dimensions **A/B/C = 900/117/89 mm**

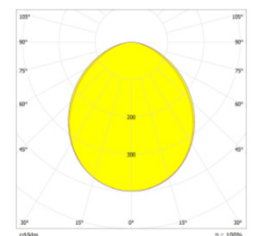
packaging weight **3,6 kg**



FAST MOUNTING



Photometric curves



MILKY PROTECTION

8.565lm (143lm/wat)